



(12) **EUROPEAN PATENT SPECIFICATION**

(45) Date of publication and mention
of the grant of the patent:
13.09.2006 Bulletin 2006/37

(51) Int Cl.:
B29C 45/13 (2006.01) B29C 45/14 (2006.01)

(21) Application number: **04017064.9**

(22) Date of filing: **28.01.1998**

(54) **Mould for producing of an assembled object**

Form zur Herstellung eines zusammengesetzten Gegenstandes

Moule pour la fabrication d'un objet assemblé

(84) Designated Contracting States:
**AT BE CH DE DK ES FI FR GB GR IE IT LI LU MC
NL PT SE**

(30) Priority: **29.01.1997 DK 10397**

(43) Date of publication of application:
10.11.2004 Bulletin 2004/46

(62) Document number(s) of the earlier application(s) in
accordance with Art. 76 EPC:
98900844.6 / 1 058 612

(73) Proprietor: **GRAM, Jes Tougaard**
DK-3460 Birkerod (DK)

(72) Inventor: **GRAM, Jes Tougaard**
DK-3460 Birkerod (DK)

(74) Representative: **Jensen, Peter Kim et al**
c/o Chas. Hude
H.C. Andersens Boulevard 33
1780 Copenhagen V (DK)

(56) References cited:
US-A- 3 224 043 US-A- 3 319 300
US-A- 4 726 558 US-A- 5 338 592

- **PATENT ABSTRACTS OF JAPAN vol. 010, no. 363**
(E-461), 5 December 1986 (1986-12-05) & JP 61
161004 A (SHOWA DENKO KK), 21 July 1986
(1986-07-21)

Note: Within nine months from the publication of the mention of the grant of the European patent, any person may give notice to the European Patent Office of opposition to the European patent granted. Notice of opposition shall be filed in a written reasoned statement. It shall not be deemed to have been filed until the opposition fee has been paid. (Art. 99(1) European Patent Convention).

Description

[0001] The invention concerns a mould for the production of one in at least two subsequent castings moulded object according to the preamble to claim 1.

5 [0002] It is a known technique to mould an object in two or more subsequent castings, e.g. an injection moulded object in plastic in two different colours cast subsequently. This can be realized by first moulding the material of one colour in one part of the for this purpose arranged mould, e.g. a letter in a key in a keyboard. After the cooling of the material and removal of the core parts of the mould, the material of the other colour is moulded around the moulded letter, which now itself serves as a part of the mould, in the same mould, for the final key. This procedure requires an injection moulding
10 machine with two injection units.

[0003] There are also known injection moulds which consists of more than two mould parts, a front part and a back part, e.g. the so-called sandwich moulds which also consist of a movable middle part placed between the two other mould parts. The purpose of such a mould is not to cast objects in two or more subsequent castings, but to cast more objects at the same time in the same mould by using the in this way doubled closing area of the mould.

15 [0004] Among injection moulds containing more than one front part and one back part are further known the so-called three plate tools. Between the front part and the back part is placed a third plate as a mould part. Due to the fact that the inlet channels in the mould are placed between the two foremost mould parts and the objects between the two hindmost you achieve, that the inlet and the objects are being torn off and ejected separately when the mould is opened. The advantage hereby is that the inlet and the finished objects thus can be kept separated more easily.

20 [0005] There are also known moulds, which in their front part or their back part have an insertion, which can be turned while the mould is open. In the hitherto known cases this insertion exclusively is turned around an axis, which is parallel to the mutual direction of movement between the front part and the back part, thus you can achieve the same effect as by a turning table. The purpose of this turning movement is to achieve some extra steps during the moulding cycle, so that there e.g. can be injected material in the mould and simultaneously cooling the mould and thereby saving cycle time.

25 [0006] Further *inter alia* JP-A-02-143819 and US-A-5338592 discloses a mould according to the preamble of claim 1.

[0007] The purpose of the mould according to the invention is that by the casting of multi component objects a highly increased number of objects per time unit in a defined mould are achieved. Also you can use a considerable smaller moulding machine than possible up till now and still achieve the same number of objects per time unit.

30 [0008] The mould according to the invention is characterized by the features stated in the characterising part of claim 1, whereby the radius of the turning axis for each section, and consequently the for the turning necessary maximum distance between the front part (1) and the back part (2) becomes considerable less than if the middle part (3) had been undivided on a single axis with the same total surface area/width.

35 [0009] Due to the fact that the middle part after the moulding of the first part of the object are turned 180 degrees around an axis which is not parallel to, but in a right angle to the movement direction between the front part and the back part, a number of interesting possibilities are achieved, that has not yet been possible to achieve by the hitherto known designs of moulds.

[0010] As explanation of the principle in the procedure, a simple example can be chosen where each cycle moulds a single object comprising two parts where the front and the back of the middle part are identical. The moulding of the first part of the object is made in the cavity formed between the front part and the middle part.

40 [0011] After a suitable cooling of the object, the mould is opened so that the middle part can be turned 180 degrees preferably around a vertical axis. Doing this you must secure that the first moulded part of the object remains positioned on the part of the middle part facing the front part during the moulding.

[0012] After turning the middle part 180 degrees the mould is closed again, now with the first moulded part facing the back part and forming an integrated part of the mould for the hereby achieved new cavity. Between the middle part and
45 the back part you hereby can perform the following moulding of material from another moulding unit on the partly moulded object. Suitably simultaneously with this final moulding on the first object, there can in the now remade cavity between the front part and the middle part be performed the first moulding on the next object from the first moulding unit.

50 [0013] After a suitable cooling and hardening of the objects in both the moulding parts, suitably using the same part of the cycle time, the mould is opened and the first complete moulded object is ejected from the back part. At the same time, the middle part is turned, with the partly moulded next object placed on its other identical surface, again 180 degrees preferably back to, but possibly forwards to, its original position. Hereafter the mould is closed again and there are injected the respective materials from the two injection units, suitably simultaneously in the two mould cavities between respectively the front part and the middle part, where the first part of the following object is moulded, and between the middle part and the back part where the second and finished object is moulded. Afterwards the described cycle can be
55 repeated in a current production of finished assembled objects.

[0014] The above described cycle concerns a single assembled object ejected from the mould each time; but in principle the same will be the case for a larger quantity of cavities per mould part. In the example above it is only necessary with a single turnable middle part, because the assembled object only consists of two parts.

[0015] If the assembled object consists of more parts, the procedure also in principle is the same. Should more stations be needed due to this, an extra turnable middle part or more can be added.

[0016] It can possibly be of advantage that the turning movement of the middle part is performed outside the space between the front part and the back part. This can be realized through some kind of cassette system where the middle plate in a running cycle can be replaced with a corresponding middle plate and turned between the single mouldings outside the actual moulding area between the front part and the back part.

[0017] The procedure can in this way result in a considerable time- and cost-reduction by the moulding of assembled objects in relation to the hitherto known procedures of sequential moulding of two or more assembled component objects.

[0018] If the objects to be moulded not as foreseen in the above described example are suitably symmetrical, you can achieve the same effect when the front and the back of the turnable middle part of the mould are each others reflection. The two surfaces of the middle part can also possibly correspond in another way.

[0019] As mentioned above, at the opening of the mould after the first moulding the object or set of objects has to be released from the stationary mould part and remains positioned in/on the turnable middle part and thereby being removed to the space between the middle part and the other mould part. This removal can simplest be achieved by a better hold-down in the middle part than in the front part and correspondingly a better hold-down in the back part than in the middle part.

[0020] The necessary removal of the object from the front part, where the first part of the material is injected, via the middle part to the back part where the final portion of the material is injected, as well as where the ejection of the finished assembled object takes place, can also be achieved in another way. This e.g. can be realized by an ejector, a core pull or a jaw system placed in the turnable middle part. The ejector system e.g. can be of a new design especially developed for the middle part where the ejectors have a direct connection between the opposing cavities in the middle part. Hereby the ejectors e.g. through a ball screw system placed in the middle of the ejector in the middle plate can move the ejectors forth and backwards in the part of the middle plate facing the back part. While the ejectors have a direct connection between the opposing cavities or cores in the middle plate, it hereby becomes possible to eject the objects, there are positioned on a core or in another way are placed on the middle part, without using any considerable space in the mould for this purpose.

[0021] In a special design of the mould at least one of the turnable middle parts are thermally insulated e. g. with an insulating plate between the front and the back of the middle part. It can hereby be achieved, that e.g. in the cavities between the front part and the middle part, a considerably higher temperature can be sustained, than in the cavities between the middle part and the back part. This in principle can also be realized by the traditional index mould/turn mould where e.g. the one part of the movable plate is insulated opposed to the other part.

[0022] For the best possible utilization of the insulated middle part the following minor changes of the above-mentioned procedure can be recommended: When the partly moulded object or objects are removed from the hot area between the front part and the middle part to the cooler area between the movable middle part and the back part, the middle part is turned immediate after the object(s) hereby has/have been transferred to be positioned in the back part, and 180 degrees backwards again. Hereby the hottest part of the middle plate will always be pushed against the hot front part, whereby it e.g. becomes easier to sustain a considerably higher temperature in the area at the front part than in the area at the back part.

[0023] The advantage in sustaining a constant and high difference in temperature in the mentioned areas is that you hereby achieve the possibility to mould two different materials together, which normally is not possible by the use of a traditional mould. It can e.g. be a thermo plastic material and an elastomer, a thermo plastic material and a silicone plastic, a silicone and a metal and so forth.

[0024] This method to sustain a considerable difference in temperature between two areas in the mould on the contrary will hardly be necessary when using the procedure to mould a thermo plastic material together with a metal or two different metals together. This because both metals and thermo plastic materials are ejected in cooled conditions.

[0025] Using the procedure you e.g. can mould a metal as aluminium in the front part and a polyolefine in the back part. Hereby there also can be obtained the advantage that when the plastic is moulded around the metal, the plastic material can cover the rough edges that appear by the moulding of metals. These rough edges that normally appear when moulding metal, therefore need not be removed, but on the contrary they can contribute with a better connection of the plastic to the metal. This makes it possible to develop a machine according to the invention that is capable of moulding plastic and metal together. But such a combined plastic and metal moulding machine can also be utilized in connection with existing mould constructions.

[0026] The more precise advantages and designs of the invention will appear from the drawing and the connected description.

[0027] Figures 1-8 are not part of the invention.

[0028] Fig. 1 shows a design with a closed mould and the first part of the object moulded,
 Fig. 2 shows the same during opening,
 Fig. 3 shows the same in fully opened condition with the middle part turned 90 degrees,
 Fig. 4 shows the same during closing,

Fig. 5 shows the same fully closed,

Fig. 6 shows the same after the moulding in both sides of the middle part,

Fig. 7 shows the same after opening and ejection of the first finished object,

Fig. 8 shows a design with an insulation in the middle part,

5 Fig. 9 shows a mould according to the present invention having the middle part divided into sections.

[0029] In fig. 1 is shown from above a section of an example of a closed mould. The mould consists of a stationary front part 1 and a movable back part 2, as well as a movable middle part 3 that further can be turned around an in this case vertical placed axis/axle 4. In the shown example is just moulded as the first part 5 of the object a screw cap intended to be moulded separately together with a matching threaded tube neck for serving as a closure on a glass for
10 pills. On the front part 1 is also a not shown injection unit. On the front part is shown the threaded cores 6 and on the back part 2 are shown the cores 7, which are smaller than the threaded cores 6, to allow the following moulding of the threaded tube neck, which here is the last moulded part of the assembled object. In the middle part 3 is shown the in both ends identically designed cavities/mould cavities 8.

[0030] Fig. 2 shows the same mould during opening, where the back part 2 is moving left with the double speed of the middle part 3, which carries the first moulded parts of the object 5 positioned in the cavities 8.

[0031] In fig. 3 is shown the same mould fully opened, where the middle part 3 now is performing its turning and is turned 90 degrees which means half-way around its axis/axle 4.

[0032] On fig. 4 is seen the same mould in the process of closing, and where the middle part 3 has fulfilled its turning of 180 degrees, so that the first moulded parts 5 of the object now face the back part.

20 [0033] Fig. 5 shows the mould in closed condition where the first moulded parts 5 of the object, here the cooled screw cap, are ready to perform as a part of the mould, as they in connection with the cores 7 in the back part 2, which has a smaller diameter than the cores 6 in the front part 1, forms cavities 9.

[0034] In fig. 6 are shown the same mould also in closed condition where the second part of the assembled object 10, the threaded tube neck, now are moulded in mould cavities 9 in the back part 2. Simultaneously the first parts of the next set of assembled objects are being moulded in the front part 1. The injection in the two surfaces of the middle part 3, as well as the cooling, has occurred at the same time, saving a considerable amount of cycle time.

[0035] In fig. 7 is seen the finishing of the first cycle, where the mould is opened and the cooled, assembled object (5, 10) now is being ejected from the back part 2 by means of ejectors not shown on the figure. As the last moulded parts of the objects 10, here the threaded tube necks, is moulded innermost, they has shrunk a little bit compared to the screw caps, whereby the two parts afterwards easily can be separated and reassembled manually. In the right part of
30 the middle part 3 the first parts of the next portion of objects are passing from the front part 1, after a turning of 180 degrees, to be placed in the back part 2, so that the following cycle is continued and the process can proceed.

[0036] In fig. 8 is shown a special design of the turnable middle part 3 supplied in the middle with an insulating plate 11 or similar, which can cause that in the area of the mould at the front part 1 a higher temperature can be maintained, than in the area at the back part 2. This is achieved especially when the turnable middle part 3, having delivered a set
35 of the first moulded part of the object to the back part 2, immediate are turned back again.

[0037] Fig. 9 shows the design according to the invention of the turnable middle part 3 where it for practical reasons is separated in two or more slim, preferably identically and vertically placed sections. Here is only shown two sections (3', 3'') each able to turn around a vertical axis/axle (4', 4''). The lesser maximum turning radius of each of the slim sections causes that the necessary distance between the front part 1 and the back part 2 at the opening will be considerably reduced. A considerably larger distance between the front part and the back part would be necessary if a single middle part 3, with the same number of cavities and width equal to the sum of the width of the single sections, should be able to turn 180 degrees in the space between the front part 1 and the back part 2.

45 Claims

1. Mould for the production of one in at least two subsequent castings moulded object and consisting of at least three mould parts, at least one middle part (3) being placed between the preferably stationary front part (1) and the movable
50 back part (2), said middle part (3) being arranged rotatably about an axis (4) being at a right angle to the movement direction between the front part (1) and the back part (2) for turning of the middle part (3) at least one time 180 degrees between the moulding of a first part (5) and the following part (6) of the object, **characterized in that** the middle part (3) is divided into several independent sections (3' and 3'') being turnable around respective axis (4' and 4'').
- 55 2. Mould according to claim 1 **characterized in that** the middle part is divided into similar sections (3' and 3'').
3. Mould according to one or more of the preceding claims **characterized in that** the sections (3' and 3'') are turnable

about respective vertical axis (4' and 4")

- 5
4. Mould according to one or more of the preceding claims **characterized in that** sections of the at least one turnable middle part (3) are thermal insulated, e.g. with an insulating plate (11) between the two surfaces of the section of the middle part (3).
- 10
5. Mould according to one or more of the preceding claims **characterized in that** the front of the sections of the middle part preferably is identical with the back or a reflexion hereof.
- 15
6. Mould according to claim one or more of the previous claims, **characterized in that** if the sections of the middle part contain objects to be removed, ejectors in the middle part are designed as direct connections between the to each other corresponding cavities and/or cores on respectively the front and the back of the sections of the middle part, the mould further being provided with a special designed ball screw or a corresponding mechanism, which causes the ejectors to serve their purpose and be moveable in both directions
- 20
7. Mould according to one or more of the previous claims **characterized in that** the hold-down, which keeps the object in the mould at a following moulding, is stronger than the hold-down at the previous moulding, whereby it is possible to move the first part of the moulded object (5) in the direction from the front part (1) of the mould to the back part (2) of the mould via the middle part (3) so there is no need for ejectors before the object in its final moulded position is ready for the ejection from the mould.

Patentansprüche

- 25
1. Form zur Herstellung eines in mindestens zwei aneinander anschließenden Gießvorgängen geformten Gegenstandes, die aus mindestens drei Formteilen und mindestens einem Mittelteil (3) besteht, das zwischen das vorzugsweise feststehende Vorderteil (1) und das bewegliche Hinterteil (2) platziert wird, wobei das Mittelteil (3) um eine Achse (4) drehbar angeordnet ist, die im rechten Winkel zur Bewegungsrichtung zwischen dem Vorderteil (1) und Hinterteil (2) liegt, um das Mittelteil (3) mindestens einmal um 180 Grad zwischen dem Formen eines ersten Teils (5) und des folgenden Teils (6) des Gegenstandes zu drehen, **dadurch gekennzeichnet, dass** das Mittelteil (3) in mehrere selbstständige Abschnitte (3' und 3") unterteilt ist, die um die jeweilige Achse (4' und 4") drehbar sind.
- 30
2. Form nach Anspruch 1, **dadurch gekennzeichnet, dass** das Mittelteil in gleiche Abschnitte (3' und 3") unterteilt ist.
- 35
3. Form nach einem der oder mehreren der vorangehenden Ansprüche, **dadurch gekennzeichnet, dass** die Abschnitte (3' und 3") um die jeweilige vertikale Achse (4' und 4") drehbar sind.
- 40
4. Form nach einem der oder mehreren der vorangehenden Ansprüche, **dadurch gekennzeichnet, dass** Abschnitte von mindestens einem drehbaren Mittelteil (3) eine Wärmeisolierung haben, z.B. mit einer Isolierplatte (11) zwischen den beiden Oberflächen des Abschnittes des Mittelteils (3).
- 45
5. Form nach einem der oder mehreren der vorangehenden Ansprüche, **dadurch gekennzeichnet, dass** die Vorderseite der Abschnitte des Mittelteils vorzugsweise mit der Rückseite oder einer Reflexion davon identisch ist.
- 50
6. Form nach Anspruch 1 oder mehreren der vorangehenden Ansprüche, **dadurch gekennzeichnet, dass**, falls die Abschnitte des Mittelteils Gegenstände enthalten, die zu entfernen sind, Auswerfer im Mittelteil als direkte Verbindungen zwischen den miteinander korrespondierenden Hohlräumen und/oder Kernen auf der Vorder- bzw. Rückseite der Abschnitte des Mittelteils ausgeführt sind, wobei die Form weiterhin mit einer speziell konstruierten Kugelgewindespindel oder einem entsprechenden Mechanismus versehen ist, der die Auswerfer ihrem Zweck dienen lässt und in beiden Richtungen bewegbar ist.
- 55
7. Form nach einem der oder mehreren der vorangehenden Ansprüche, **dadurch gekennzeichnet, dass** die Haltevorrichtung, die den Gegenstand bei einer folgenden Formung in der Form hält, stärker als die Haltevorrichtung bei der vorhergehenden Formung ist, wodurch es möglich ist, das erste Teil des geformten Gegenstandes (5) in der Richtung vom Vorderteil (1) der Form zum Hinterteil (2) der Form über das Mittelteil (3) so zu bewegen, dass kein Bedarf an Auswerfern besteht, bevor der Gegenstand in seiner endgültigen Formposition bereit zum Auswerfen aus der Form ist.

Revendications

- 5
1. Moule pour la fabrication d'un objet moulé en au moins deux coulées successives et composé d'au moins trois parties de moule, au moins une partie centrale (3) étant placée entre la partie avant (1) de préférence immobile et la partie arrière mobile (2), ladite partie centrale (3) étant agencée de manière rotative autour d'un axe (4) étant à un angle droit par rapport à la direction de déplacement entre la partie avant (1) et la partie arrière (2) pour faire tourner la partie centrale (3) au moins une fois de 180 degrés entre le moulage d'une première partie (5) et la partie suivante (6) de l'objet, **caractérisé en ce que** la partie centrale (3) est divisée en plusieurs sections indépendantes (3' et 3'') pouvant tourner autour d'un axe respectif (4' et 4'').
- 10
2. Moule selon la revendication 1 **caractérisé en ce que** la partie centrale est divisée en sections similaires (3' et 3'').
- 15
3. Moule selon l'une ou plusieurs des revendications précédentes **caractérisé en ce que** les sections (3' et 3'') peuvent tourner autour d'un axe vertical respectif (4' et 4'').
- 20
4. Moule selon l'une ou plusieurs des revendications précédentes **caractérisé en ce que** les sections de l'au moins une partie centrale rotative (3) sont isolées thermiquement, par exemple avec une plaque isolante (11) entre les deux surfaces de la section de la partie centrale (3).
- 25
5. Moule selon l'une ou plusieurs des revendications précédentes **caractérisé en ce que** l'avant des sections de la partie centrale est de préférence identique à l'arrière ou à une réflexion de celui-ci.
- 30
6. Moule selon l'une ou plusieurs des revendications précédentes **caractérisé en ce que**, si les sections de la partie centrale contiennent des objets à retirer, des éjecteurs dans la partie centrale sont conçus comme des connexions directes entre les cavités et/ou noyaux situés face à face respectivement sur l'avant et l'arrière des sections de la partie centrale, le moule étant en outre doté d'une vis à rotule adaptée ou d'un mécanisme correspondant, qui fait remplir leur rôle aux éjecteurs et qui les rend mobiles dans les deux directions.
- 35
7. Moule selon l'une ou plusieurs des revendications précédentes **caractérisé en ce que** le serre-tôle, qui garde l'objet dans le moule au niveau d'un moulage suivant, est plus fort que le serre-tôle au niveau du moulage précédent, moyennant quoi il est possible de déplacer la première partie de l'objet moulé (5) dans la direction allant de la partie avant (1) du moule à la partie arrière (2) du moule via la partie centrale (3) de sorte que les éjecteurs ne sont pas nécessaires avant que l'objet dans sa position moulée finale soit prêt à être éjecté du moule.
- 40
- 45
- 50
- 55

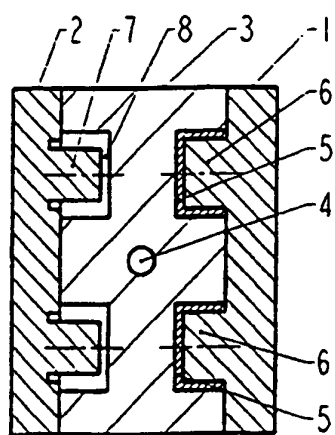


Fig. 1

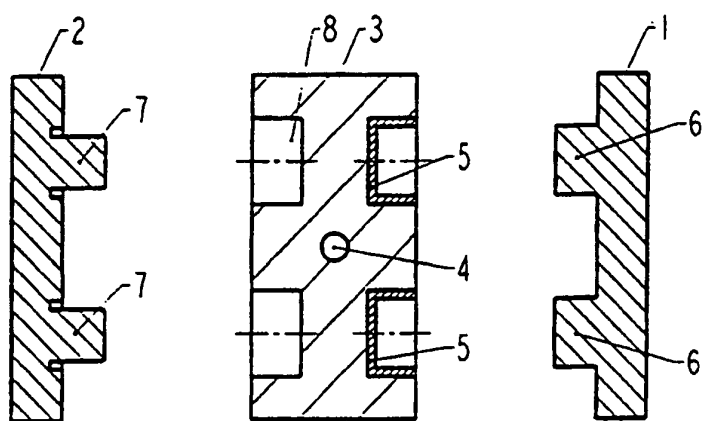


Fig. 2

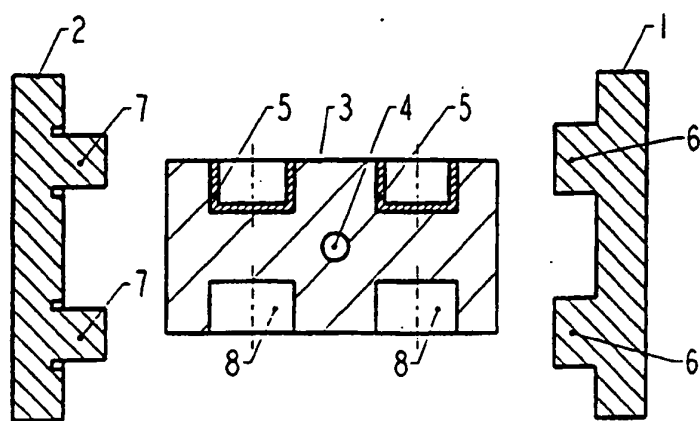


Fig. 3

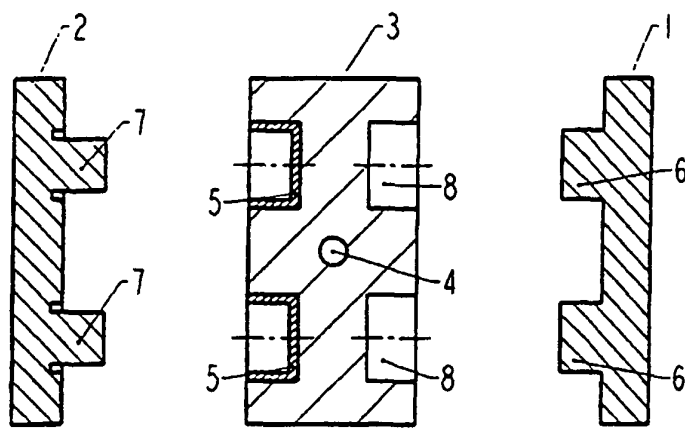


Fig. 4

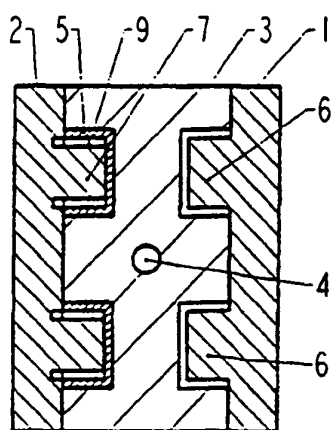


Fig. 5

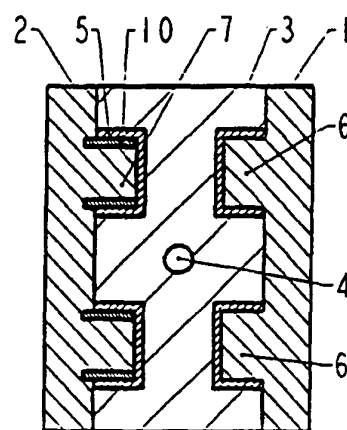


Fig. 6

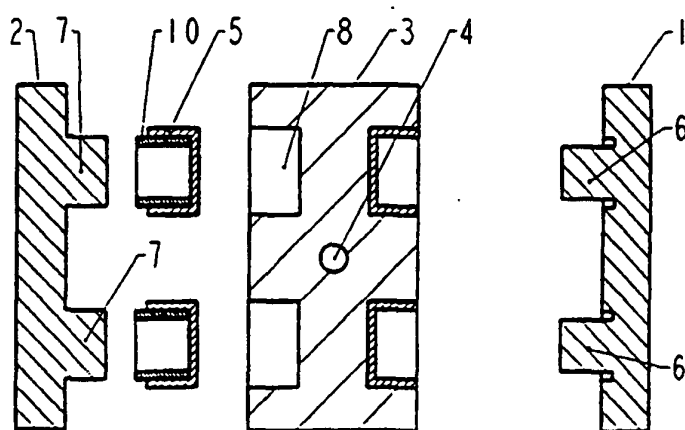


Fig. 7

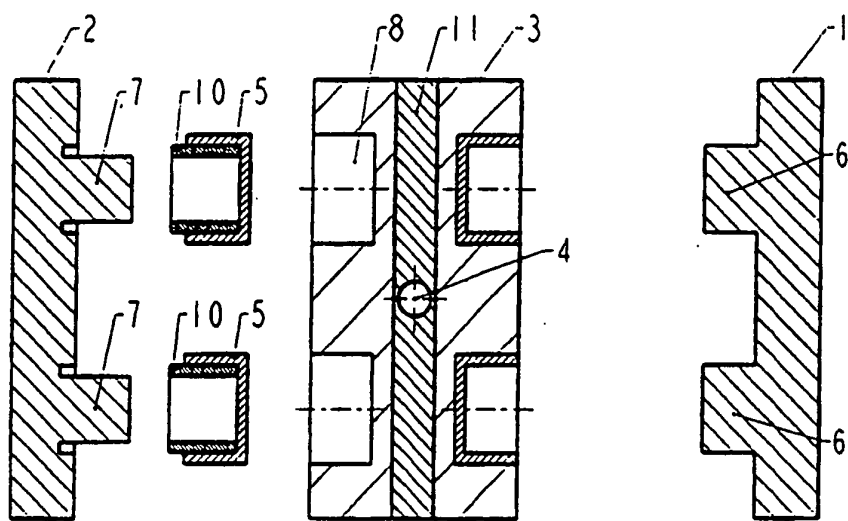


Fig. 8

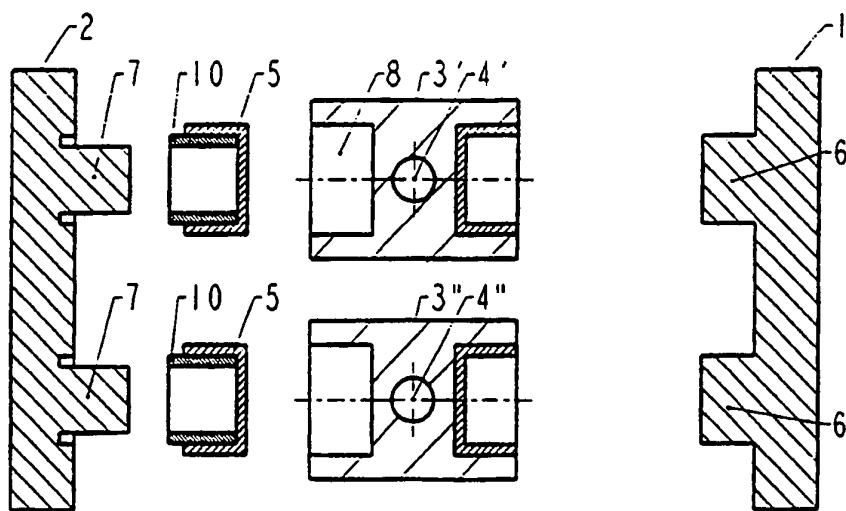


Fig. 9